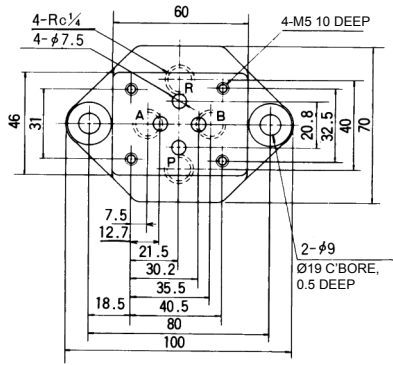


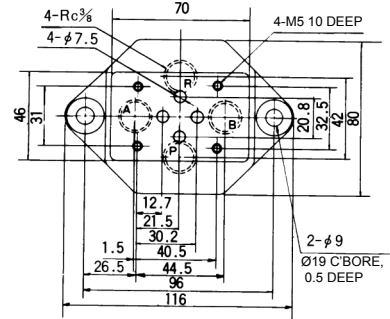
TYPE T1 SUBPLATE FOR SOLENOID VALVE

● SHD025-02T1A



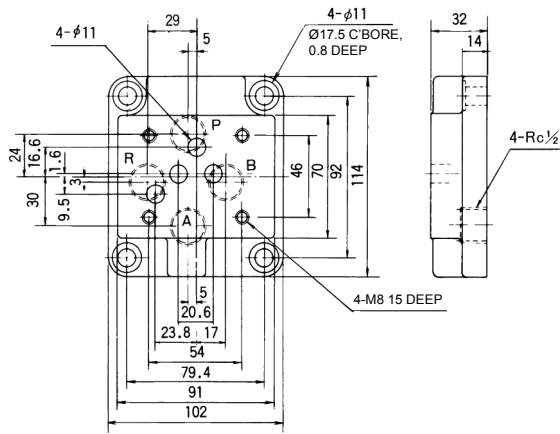
MASS: 1.0 kg

● SHD025-03T1A



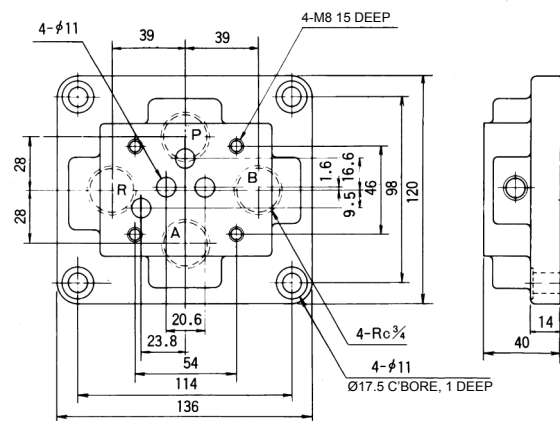
MASS: 1.6 kg

● SHD03-04T1A



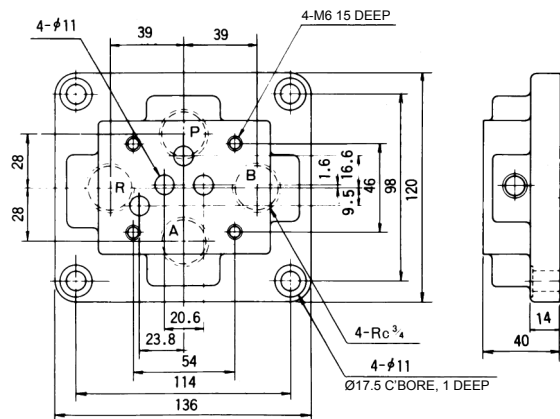
MASS: 1.9 kg

● SHD03-06T1A

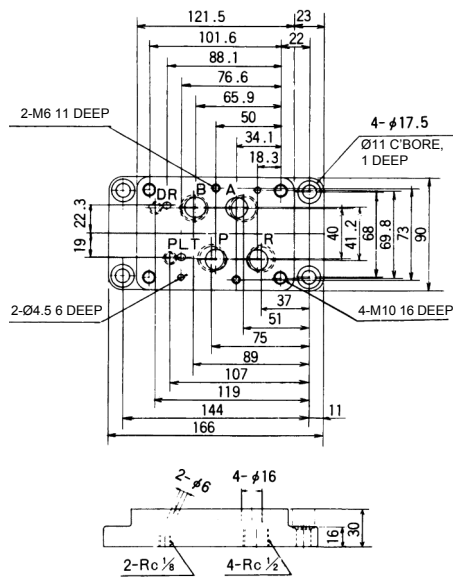


MASS: 2.6 kg

● SHDS03-06T1A

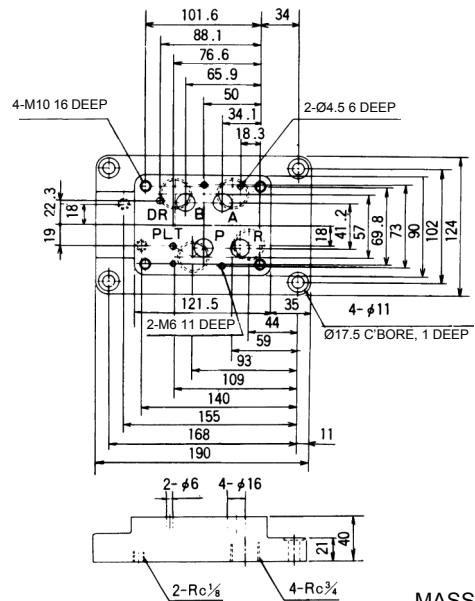


● SHD04-04T1



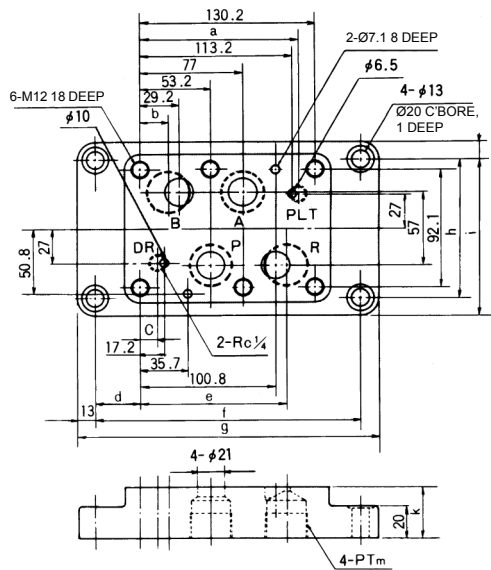
MASS: 2.4 kg

● SHD04-06T1



MASS: 4.5 kg

● SHD06-**T1(A)



MASS: SHD06-06T1A 4.8 kg
SHD06-08T1 6 kg

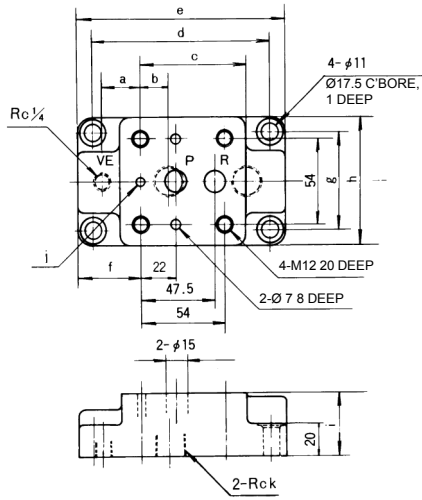
● Dimension Table of SHD06-**T1(A)

Model	a	b	c	d	e	f	g	h	j	k	m
SHD06-06T1A	116	27	14.5	24.43	103	179	205	80	114	35	3/4
SHD06-08T1	117	21.5	13.5	33.9	109	198	224	108	134	40	1

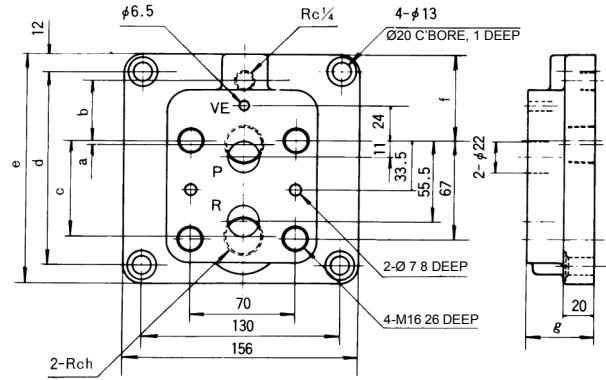
TYPE T3 SUBPLATE FOR RELIEF VALVE

With Type T3 subplates, the pitch intervals between ports are wider than those of Type T1 subplates to facilitate re-tightening of bolts.

● SHR04-**T3



● SHR06-**T3

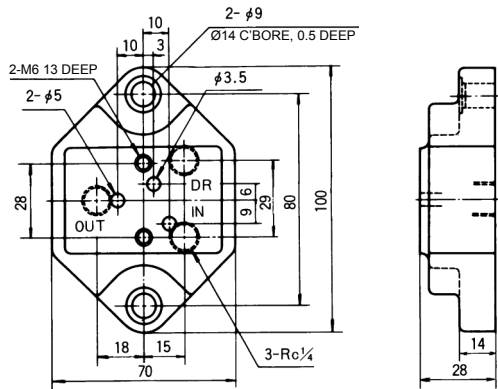


Model	a	b	c	d	e	f	g	h	i	j	k
SHR04-04T3	24.5	17.5	67.5	114	132	40	62	80	40	Ø6	1/2
SHR04-06T3	28	22	85	145	165	48	71	91	45	Ø6	3/4

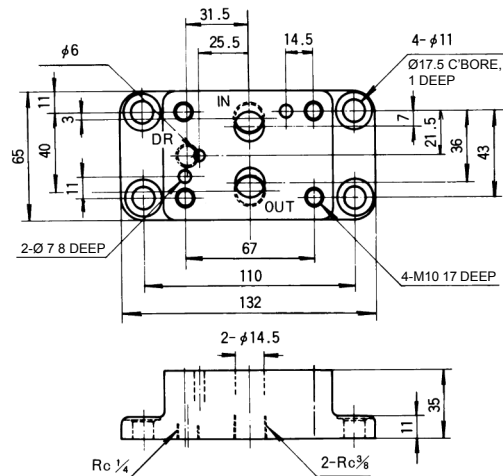
Model	a	b	c	d	e	f	g	h
SHR06-06T3	2	41	65	132	156	59	45	3/4
SHR06-08T3	11	54	88	176	200	75	55	1

TYPE T3 SUBPLATE FOR PRESSURE REDUCING VALVE

● SHG02-02T3

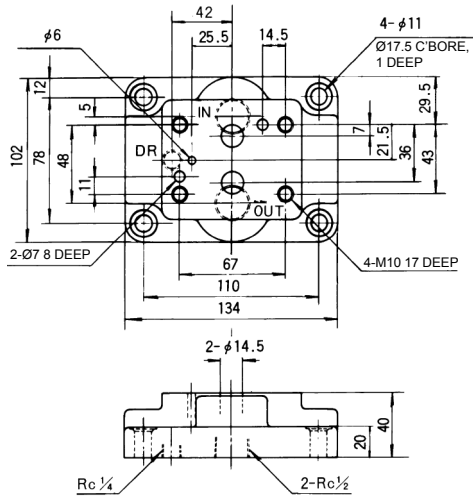


● SHG03-03T3

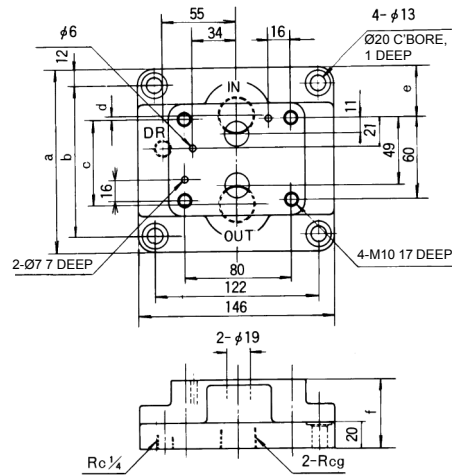


TYPE T3 SUBPLATE FOR PRESSURE REDUCING VALVE

● SHG03-04T3



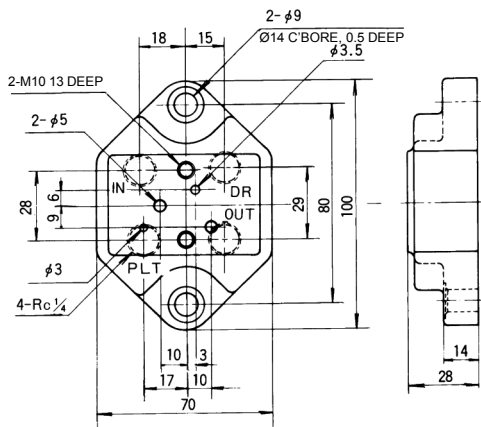
● SHG06-**T3



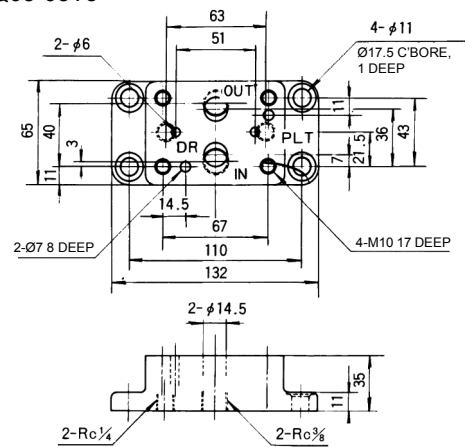
Model	a	b	c	d	e	f	g
SHG06-06T3	134	110	62.5	2.5	37	50	3/4
SHG06-08T3	154	130	70	10	47	57	1

TYPE T3 SUBPLATE FOR SEQUENCE VALVE

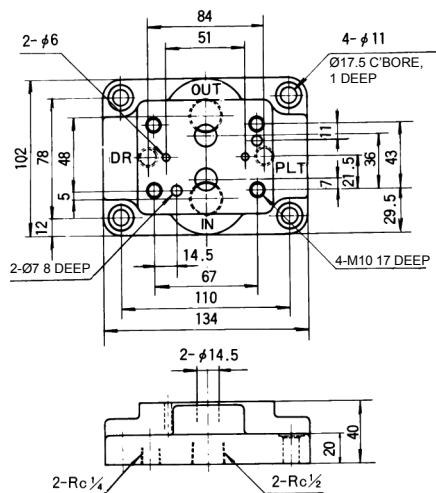
● SHQ02-02T3



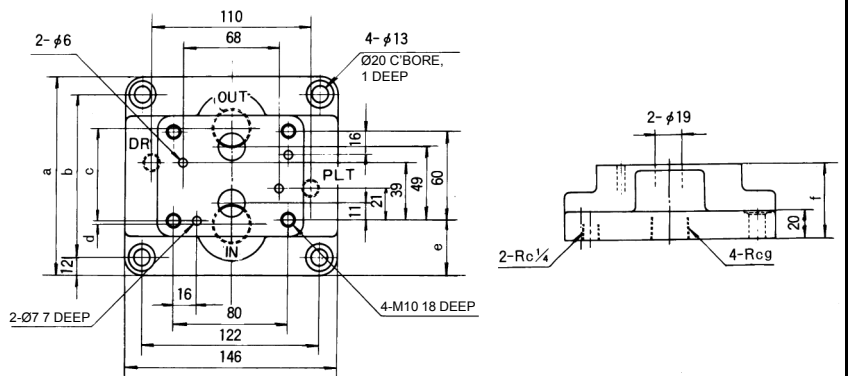
● SHQ03-03T3



● SHQ03-04T3



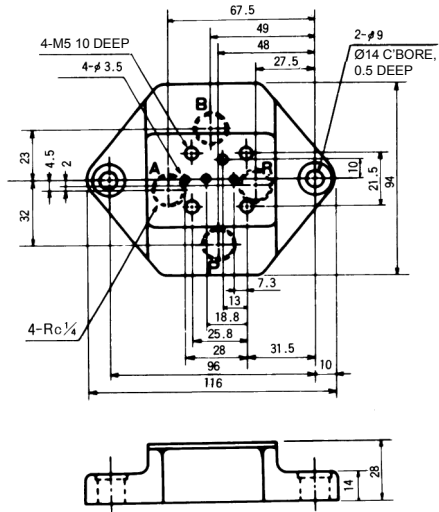
● SHQ06-**T3



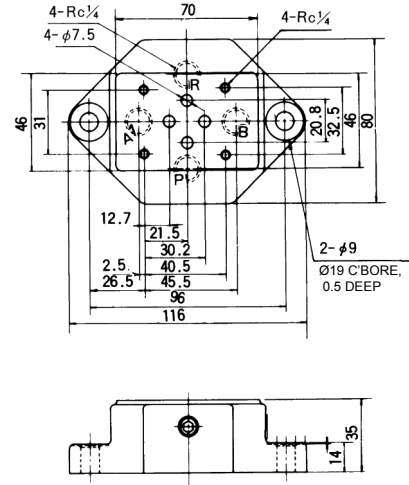
Model	a	b	c	d	e	f	g
SHQ06-06T3	134	110	62.5	2.5	37	50	3/4
SHQ06-08T3	154	130	70	10	47	57	1

TYPE T3 SUBPLATE FOR SOLENOID VALVE

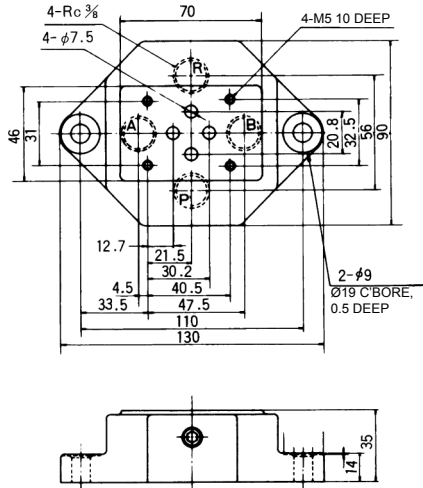
● SHD02-02T3



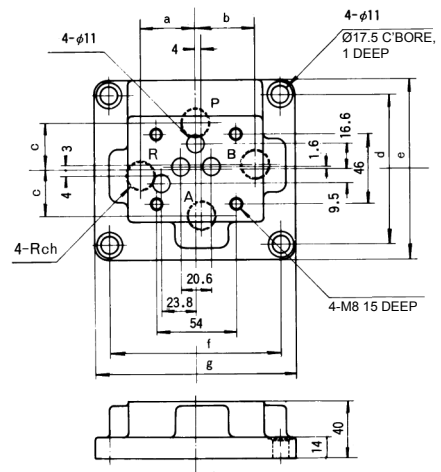
● SHD025-02T3A



● SHD025-03T3A



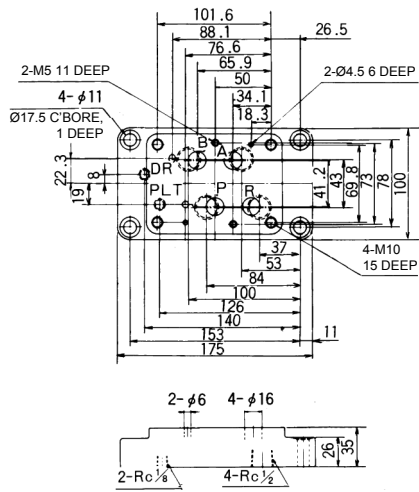
● SHD03-**T3



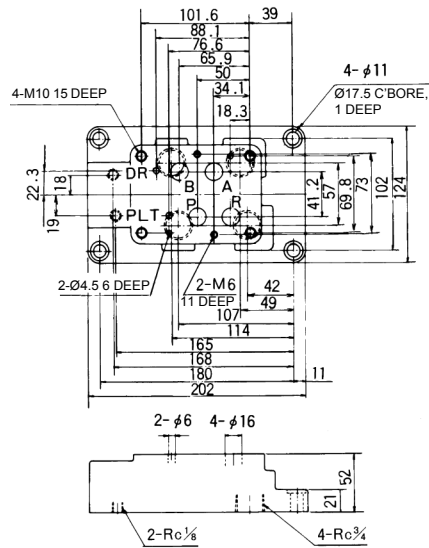
Model	a	b	c	d	e	f	g	h
SHD03-04T3	37	40	31	98	120	114	135	1/2
SHD03-06T3	48	51	42	126	148	142	164	3/4

TYPE T3 SUBPLATE FOR SOLENOID VALVE

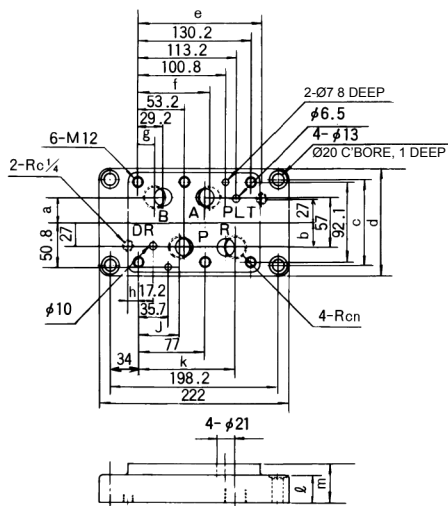
● SHD04-04T3



● SHD04-06T3



● SHD06-**T3



Model	a	b	c	d	e	f	g	h	J	k	ℓ	m	n
SHD06-06T3	28.5	28.5	100	124	142.2	82.2	19.2	12	48.2	111.2	31	45	3/4
SHD06-08T3	20	20	110	134	146.2	83.2	6.2	16	47.2	124.2	31	50	1